

DD862 Single Phase Electromechanical Energy Meter



Application

DD862 single phase electromechanical front board installed active energy meter is a kind of new style single phase two wire active energy meter, fully absorb new technologies about electromechanical meter from domestic and abroad. The meter completely accord with relevant technical requirements of class 2 single phase active energy meter stipulated in International standard IEC 62053-11. It can accurately and directly measure 50Hz or 60Hz active energy consumption from single phase AC electricity net, it is use for setting indoor or out door meter box. The meter has novel design, rational structure, and it can display total energy consumption by drum wheel mechanical counter. It has following features: High overload, power loss, long-life, specious appearance, etc.

Functions and features

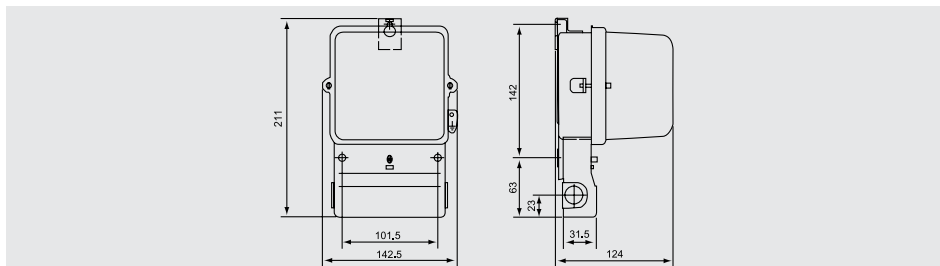
- Front board three holes fixed installation, the cover is made of high definition transparent glass material molded overall, the base of the meter is made of quality armor plate which through pressing and forming and via double anticorrosive processing and the terminal block is made of quality bakelite material which is moisture-resistant, fire-retardant, high temperature molded overall. It has following features: Good weatherability, high rigid, specious appearance, etc.
- The meter frame adopt aluminum alloy molding with excellent mechanical strength, stable structure and anti-impact.
- Voltage components and current components is used of double insulation structure, has good electrical characteristics.
- Standard configuration bottom bearing is used of double jewel bearing, upper oriented bearing is made of high wear resistance copper alloy bush and stainless steel needle. It has following features: long life and minimal friction, etc.
- May select magnetic thrust bearing or magnetic suspension.
All kinds of adjustment mechanism adopt no step shifting mechanism. The meter starting and creeping needn to be adjusted which is finished by anti-creeping hole of disc and convenient for adjusting by users.
- Standard configuration 5 digits display by drum wheel mechanical counter, may select 6 digits display by drum wheel mechanical counter.
- Standard configuration without anti-reverse device, may select add the anti-reverse function. (Please specified when ordering).
- Single component measure single phase two wire active energy consumption. Complying with standard IEC 62053-11.
- Direct connect operation, there are two types you may select. Standard configuration type A wiring, may select type B wiring.
- Extension terminals cover, it is for protecting use electrical safety.

Technical parameters

Model	Accuracy	Reference voltage (V)	Current specifications (A)	Starting current (A)	Insulation performance
DD862	Class 2	220(240)	5(20)	0.025	AC voltage 2kV for 1 minute, 1.2/50us waveform impulse voltage 6kV
			10(40)	0.05	
			20(80)	0.1	
			30(100)	0.15	

*If you need different reference voltage or current specification, please advisory our sales

Outer and mount dimension



Wiring diagram

