

KT-R Bulkhead lamps

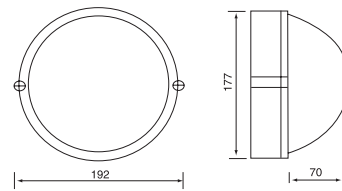
APPLICATIONS

Garden, avenues, court-yards.

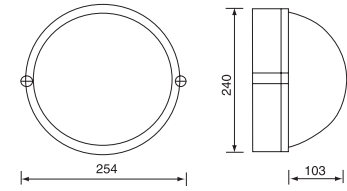
SPECIFICATIONS

CCC, CE, ISO9000

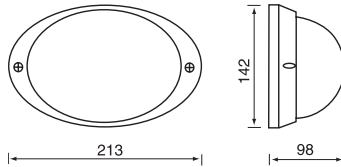
1. Model: KT-R;
2. Max Watt: A/60W, B/100W;
3. Main Material: Die-Casting Aluminium Body;
4. Operating Voltage: 220-240V /110V-130V, 50/60Hz;
5. IP Rating: IP44,IP54;
6. Finished: Black, White .



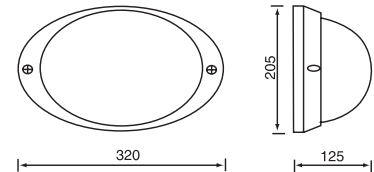
A (60W)



B (100W)



A (60W)



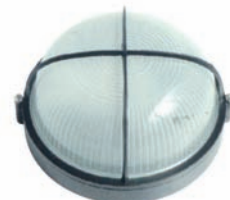
B (100W)



KT-R4004A 60W
KT-R4004B 100W



KT-R4005A 60W
KT-R4005B 100W



KT-R4006A 60W
KT-R4006B 100W



KT-R4007A 60W
KT-R4007B 100W



KT-R4008A 60W
KT-R4008B 100W



KT-R4009A 60W
KT-R4009B 100W



KT-R4019A 60W
KT-R4019B 100W



KT-R4020A 60W
KT-R4020B 100W



KT-R4021A 60W
KT-R4021B 100W



KT-R4022A 60W
KT-R4022B 100W



KT-R4023A 60W
KT-R4023B 100W



KT-R4024A 60W
KT-R4024B 100W