

ST Boxes

CONSTRUCTION

Body and doors manufactured in 1.5mm sheet steel.
Mounting plate with folded edge in 2.5mm sheet steel.

FINISH

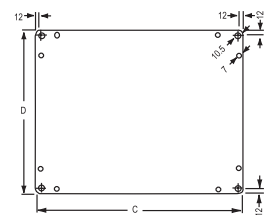
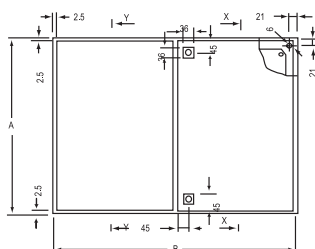
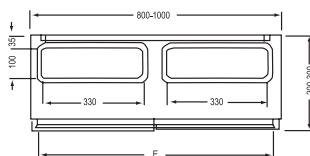
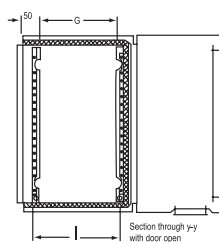
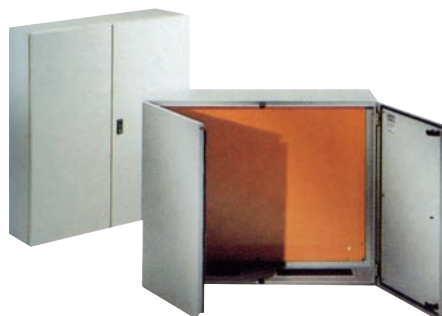
T & J standard cycle thermosetting epoxy polyester powder coating.
Body and doors RAL 7032 textured finish.
Mounting plate in RAL 2004 smooth finish.

PROTECTION DEGREE

IP 55 to EN60 529 NEMA 12.

PACKING

Boxes are complete with:
4 zincpassivated rails to be fixed on the door.
Mounting plate.
2 gland plates and gasket.
Package with hardware for earth connection and screws to mount all components.
Locking system with 3mm double bar key.



SPECIFICATION

Model	Dimension		
	A	B	C
CT-6615	700	600	150
CT-6620	700	600	200
CT-5720	700	500	200
CT-5725	800	500	250
CT-6720	800	600	200
CT-6820	800	600	200
CT-8820	1000	800	200
CT-8830	1000	800	300
CT6-1020	1000	600	200
CT6-1025	1000	600	250
CT6-1030	1000	600	300
CT8-1020	1000	800	200
CT10-1025	1000	1000	250
CT10-1030	1000	1000	300
CT6-1220	1000	600	200
CT6-1220	1000	800	200
CT6-1430	1400	600	300
CT8-1430	1400	800	300
CT8-1630	1600	800	300
CT10-1630	1600	1000	300
CT10-1630	1800	1000	300